



S C H I W Y



CHATEAU SCHIWY
HEADQUARTERS S.W.68



Hunting Club Diana
Aug. 1927

SCHIWIWY

The company Ludwig Schiwy S.W.68 - Berlin was founded in the 1920s. Schiwy was one of the most important manufacturers of sporting weapons in Germany after the First World War. Handmade hunting weapons at that time were the prerogative of a privileged group of wealthy people. Ludwig Schiwy managed to create unique works of art from sporting weapons in every tiny detail of his work. These weapons were handmade to order at the request of customers. In the late 20's Schiwy patented several technical improvements and thanks to the high quality of his products the company became the exclusive supplier of the Reich - Hauptjägermeister Hermann Göring.

Schiwy



OVER & UNDER DOUBLE RIFLE
L.SCHIWY BERLIN

Weight 4,08 kg
Total length 105,8 cm
Caliber 9,3x74R / 9,3x74R

OVER & UNDER DOUBLE
RIFLE L.SCHIWY BERLIN

is without a doubt one of the most important hunting rifles in the world. This is due to very careful workmanship and precise engraving, richly decorated with arabesques due to the position of the customer. On the crown handle is set in gold the coat of arms of the Reichsmarschall and Oberreichsjäger Hermann Göring.



L.SCHIWY BERLIN

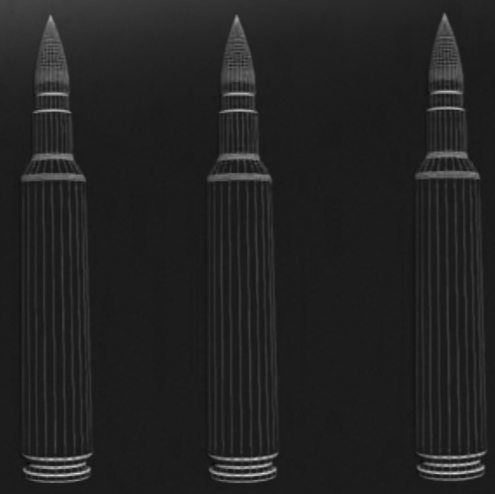
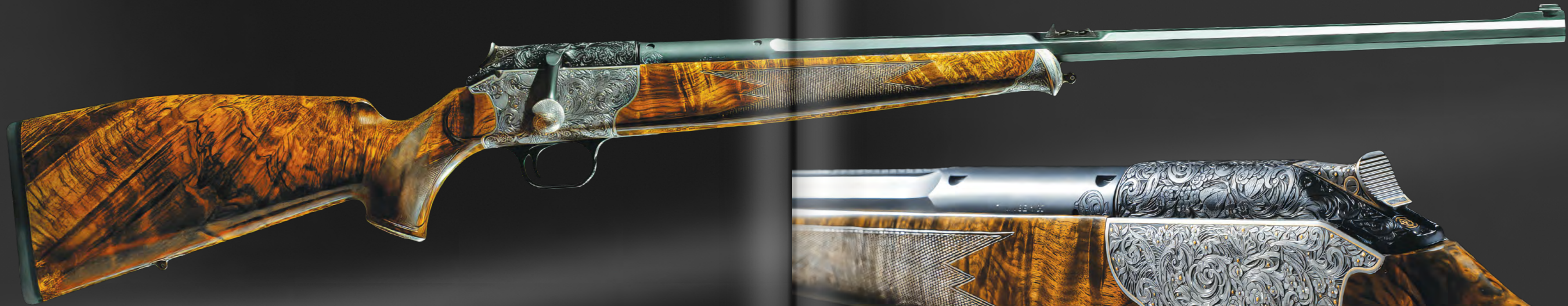
REEDITION



DOUBLE RIFLE
S.W.68 SCHIWY BERLIN

Weight 4,08 Kg
Total length 105,8 cm
Caliber 8x75RS / 8x75RS

REEDITION BASED ON THE DOUBLE
RIFLE MODEL BY L. SCHIWY BERLIN



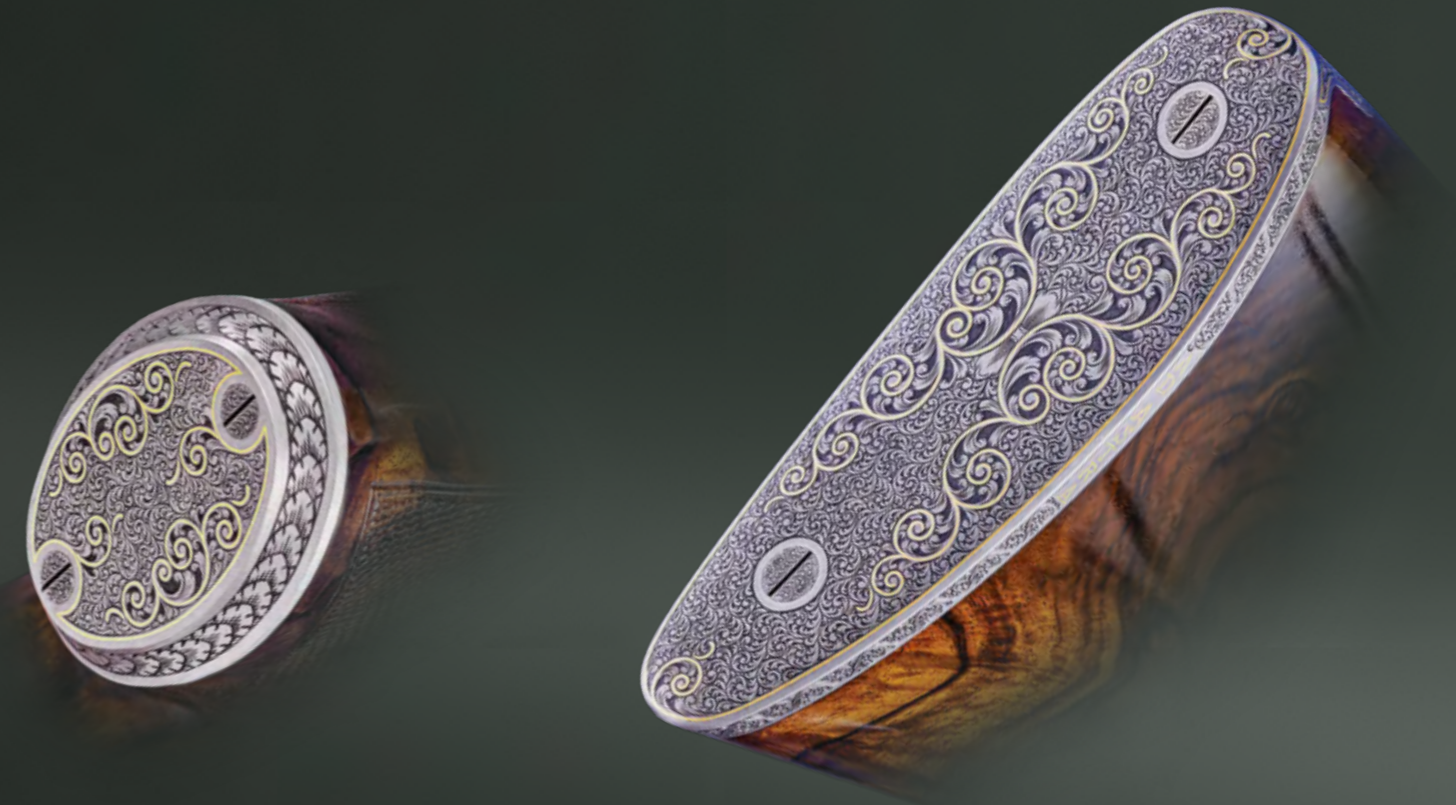
SCHIWY
R93

Weight 3,35 kg
Total length 112cm
Caliber 7x66 SE vom Hoffe



SCHIWY
R93

Weight	3,7 kg
Total length	101 cm
Caliber	6,5x55 SE





SCHIWY
R93

Weight 3,7 kg
Total length 101 cm
Caliber 30-06 Spring





Renaissance scene

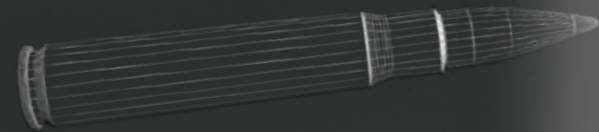
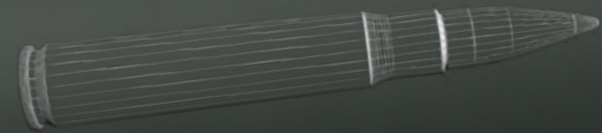
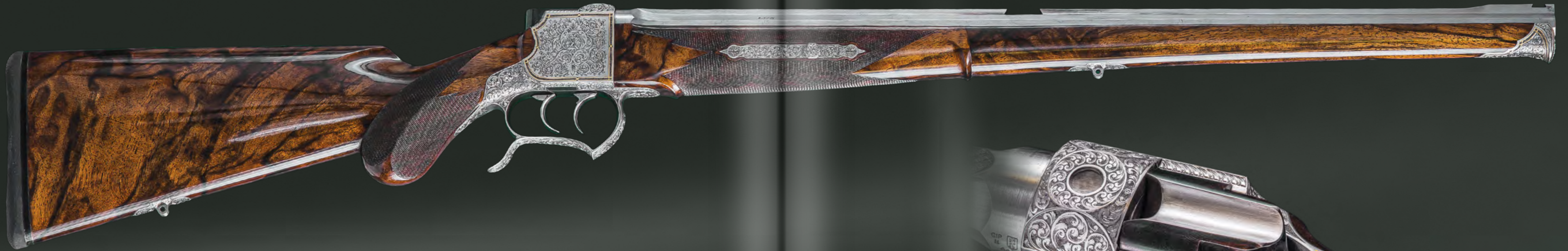


White condition



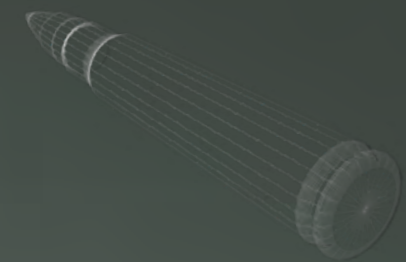
SCHIWY
M98

Weight	3,7 kg
Total length	119 cm
Caliber	5,6x61 SE vom Hoffe



SCHIWY
BLOCK

Weight 2,9 kg
Total length 101 cm
Caliber 8x57 JRS





SCHIWY TUNING
MAUSER M03

Weight 3,5 kg
Total length 103 cm
Caliber 308 WIN

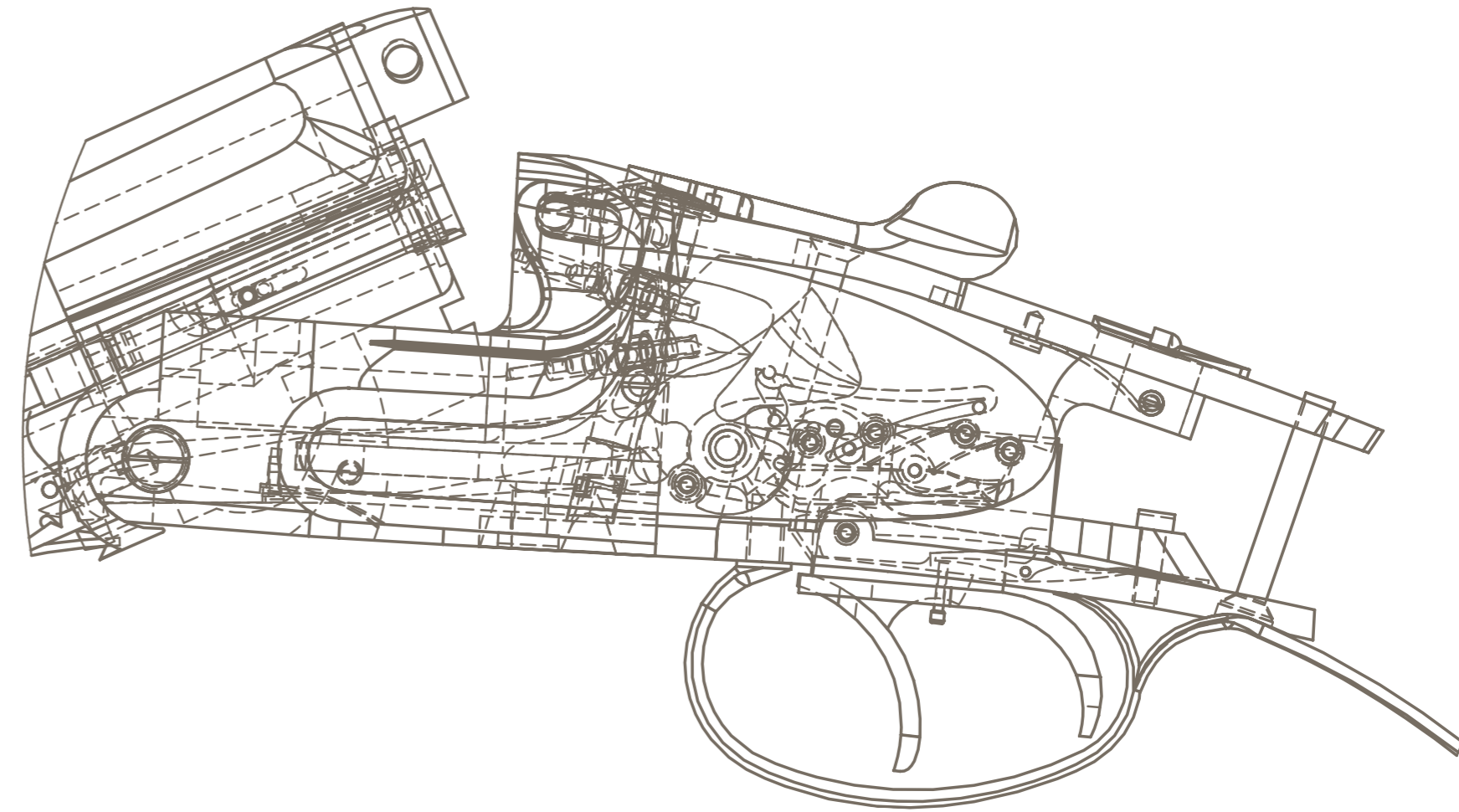




Weight 3,2 kg
Total length 111 cm
Caliber 12/70 x 12/70



SCHIWY
SUHL MODEL





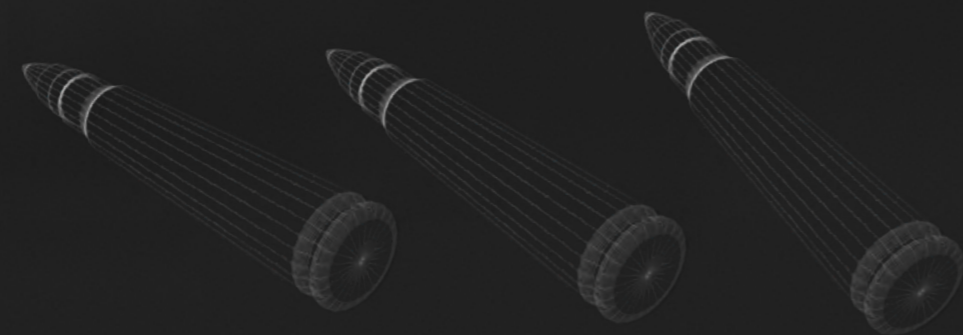


Weight 3,6 kg
Total length 102 cm
Caliber 6,5x65 RWS



SCHIWY
R93





SCHIWY
M98

Weight 3,7 kg
Total length 115 cm
Caliber 8x57 JS



SCHIWY
MANNLICHER / SCHÖNAUER

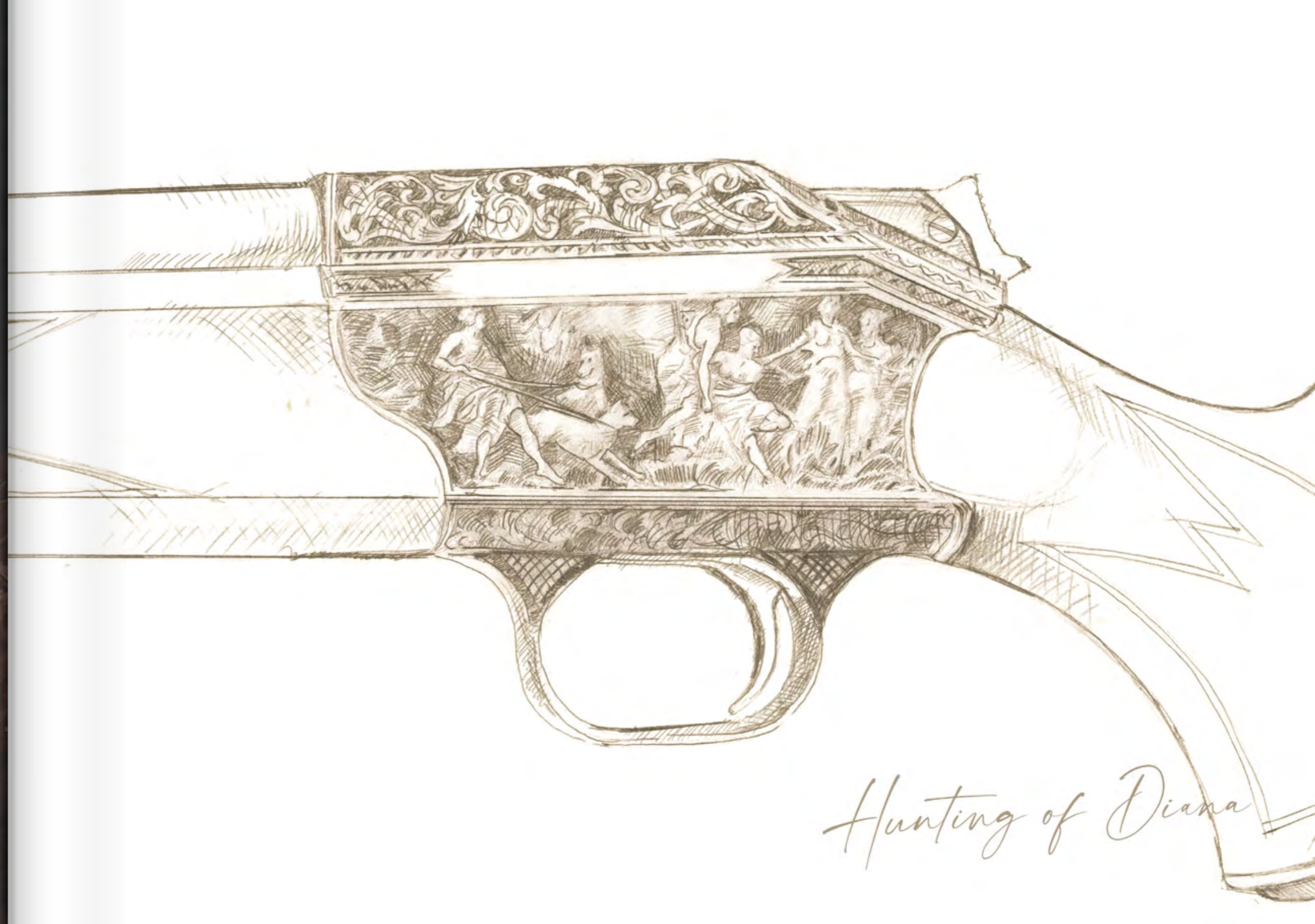
Weight 3,1 kg
Total length 100,5 cm
Caliber 8x57 JS



SCHIWY
R93

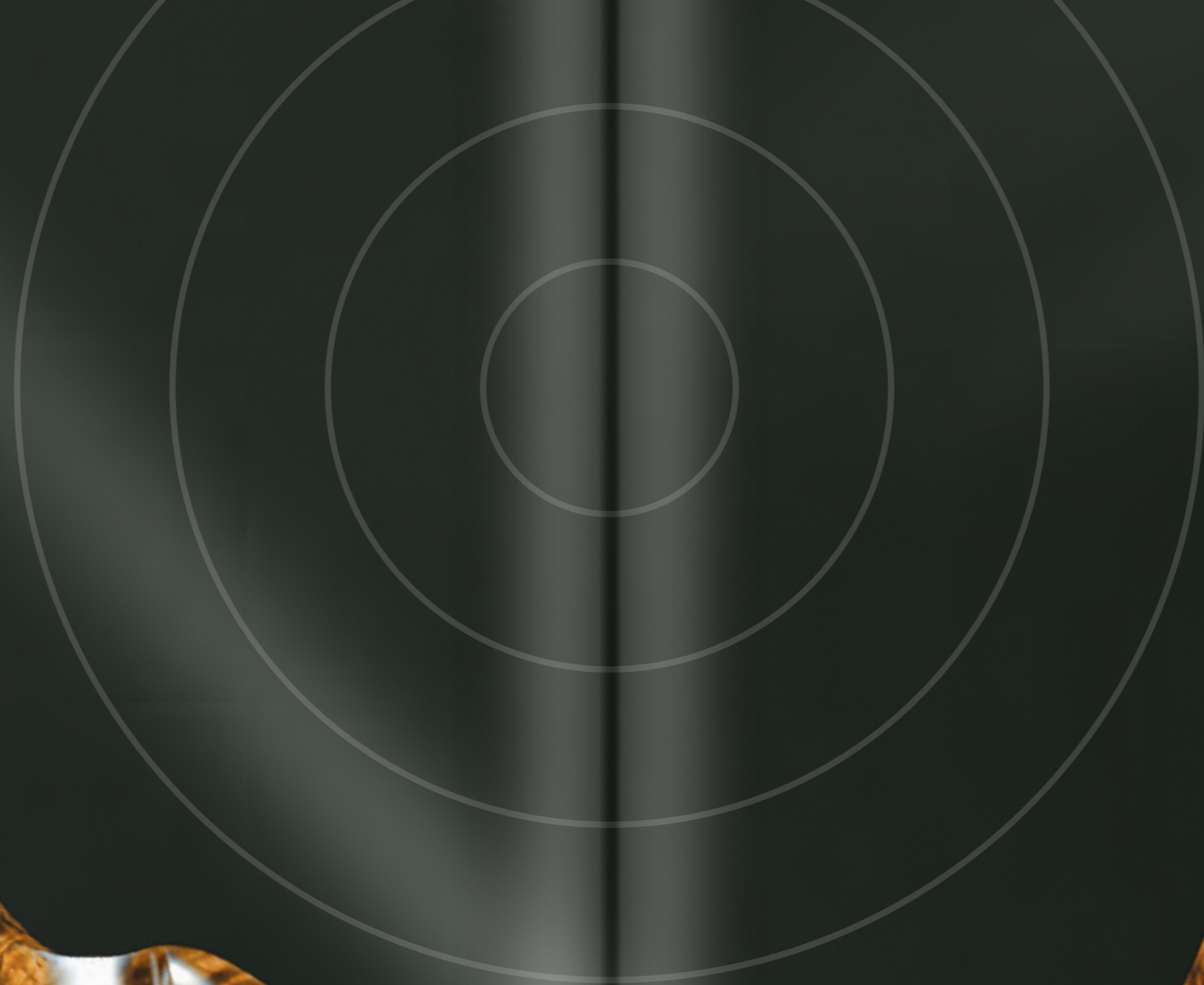
Weight 3,5 kg
Total length 101,3 cm
Caliber 6,5x55 SE











SCHIWY
R93

Weight 3,3 kg
Total length 110 cm
Caliber 5,6x61 SE vom Hoffe



Weight 3,65 kg
Total length 116 cm
Caliber 30-06 Spring

SCHIWY
M98

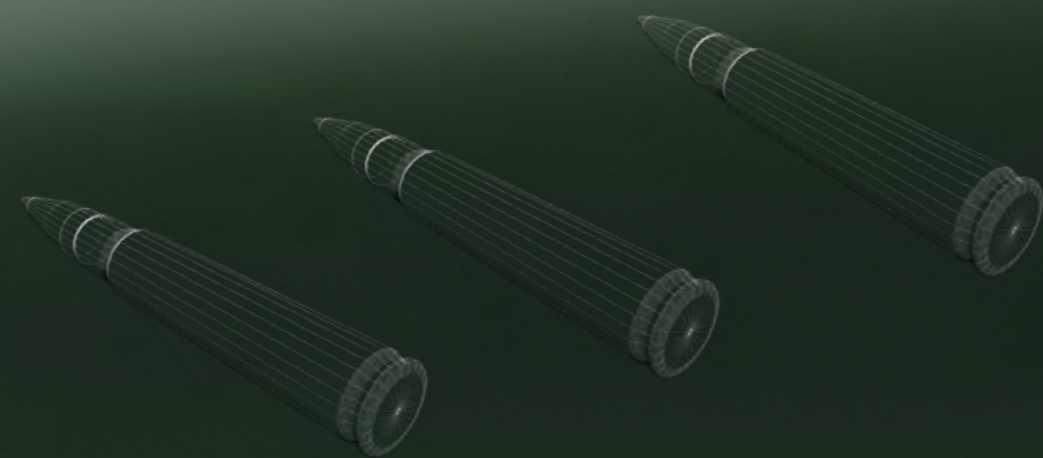


CHILDREN'S VERSION OF A SMALL
BLOCK RIFLE



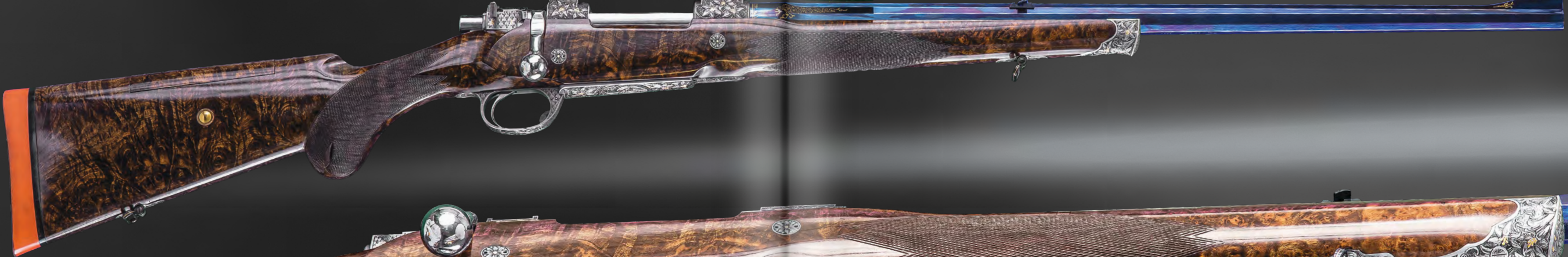
**SMALL BLOCK
RIFLE**

Weight 1,3 kg
Total length 55 cm
Caliber 6mm Flobert



S.W.68
R93

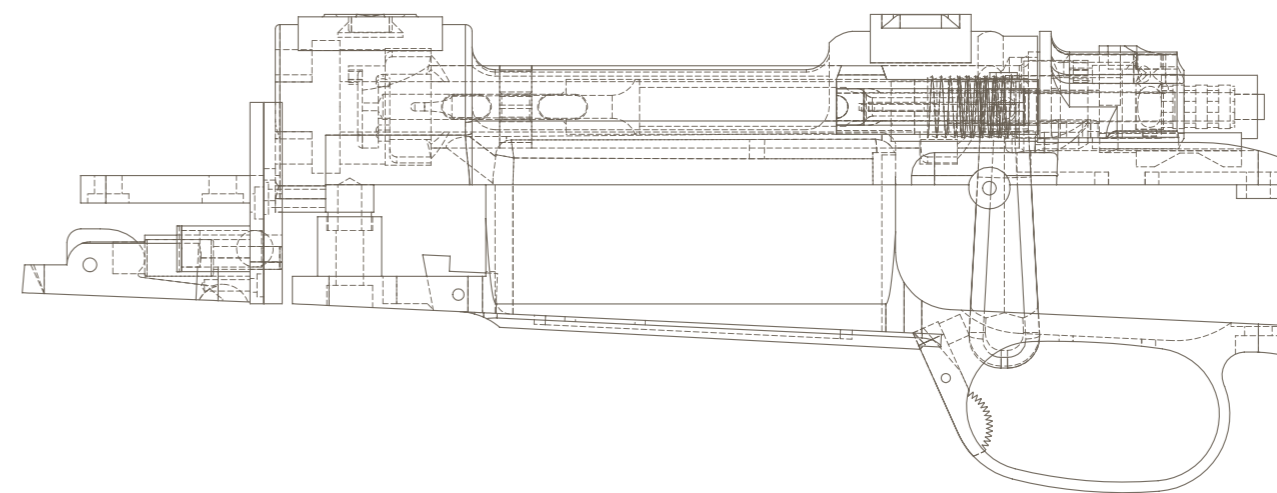
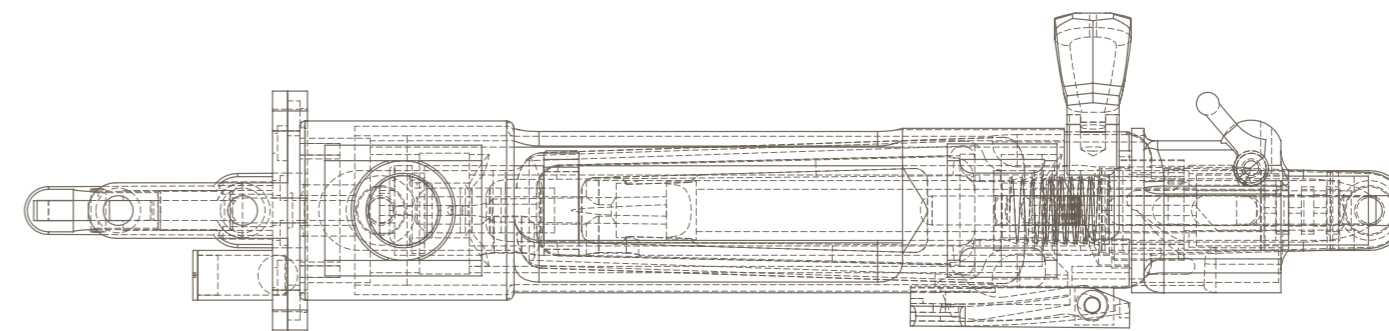
Weight 3,8 kg
Total length 108 cm
Caliber 8x68 S



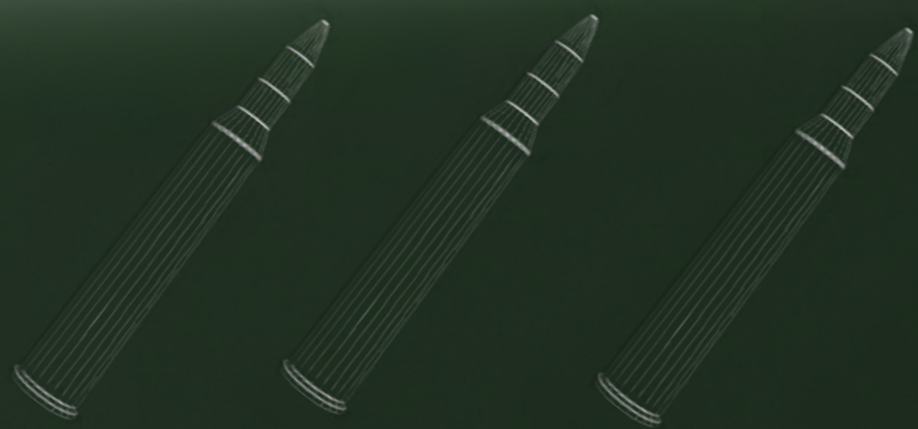


SCHIWY
M98

Weight 3,8 kg
Total length 117,5 cm
Caliber 7,66 vom Hoffe







SCHIWY
R93

Weight 3,2 kg
Total length 101 cm
Caliber 6,5x65 RWS



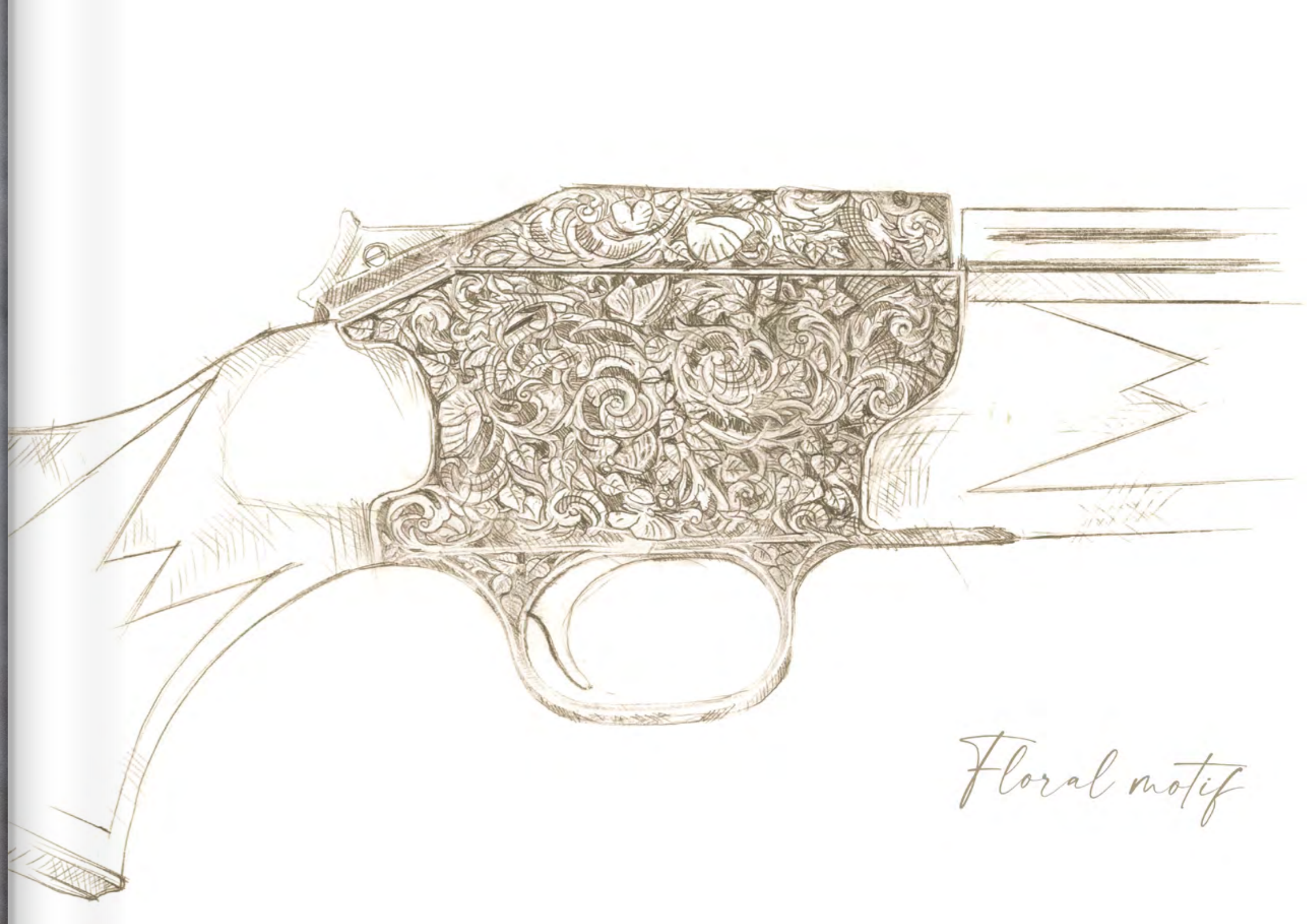
SCHIWY
DOUBLE RIFLE DRILLING

Weight	3,5 kg
Total length	111 cm
Caliber	8x57 / 8x57 / 20



SCHIWY
R93

Weight 3,55 kg
Total length 107 cm
Caliber 7x66 SE vom Hoffe



Floral motif





SCHIWY
M98

Weight 3,7 kg
Total length 119 cm
Caliber 7x64

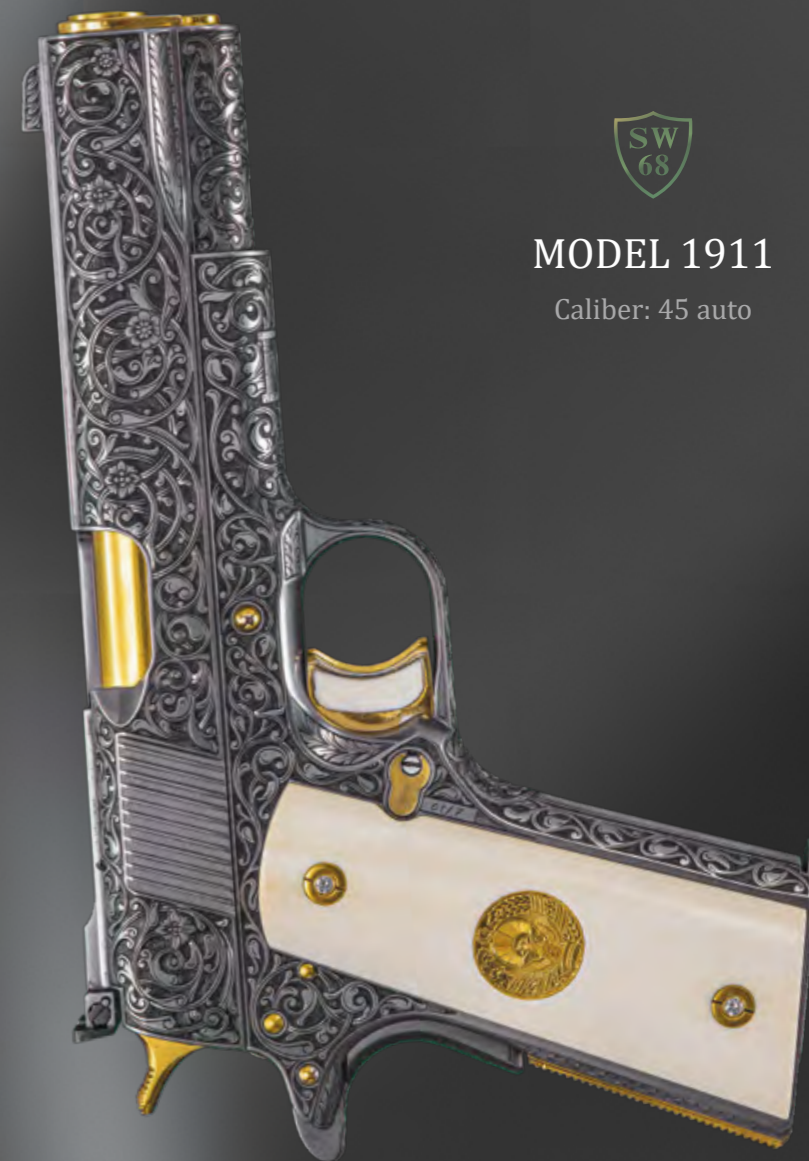


SCHIWY
MANNLICHER / SCHÖNAUER

Weight 3,7 kg
Total length 117 cm
Caliber 6,5 x 65 RWS

PISTOLS

SCHIWY EDITION



MODEL 1911

Caliber: 45 auto



MODEL 1911

Caliber: 45 auto





SCHIWY

Mark Schiwy S.W. 68. Disegnata e progettata
in Italia ed approvata dalla Sigecosta, quest'arma è
incorporata in SIGARMS nei migliori materiali ferrosi.
Non esiste in nessuna altra arma originale.

S.W.68



MODEL 1911

Caliber: 45 auto



MODEL PP

Caliber: 7,65 Browning





MODEL 1911

Caliber: 45 auto



MODEL PPK

Caliber: 7,65 Browning

EDITION J.B.007

FIRST OF SEVEN PIECES

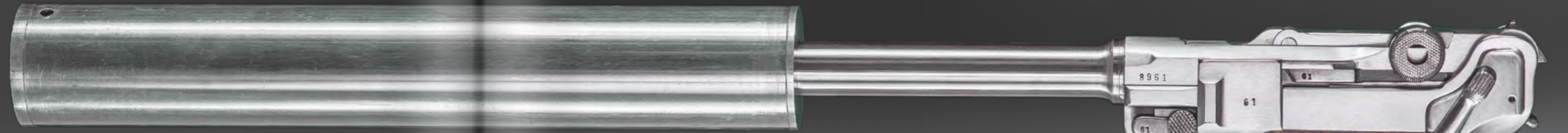
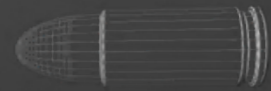




PISTOLS IN WHITE
CONDITION



MODEL PPK
Caliber: 7,65 Browning



MODEL P-04
Caliber: 9mm Luger



MODEL SCHIWY P-08
Caliber: 9mm Luger





CHATEAU SCHIWY
HEADQUARTERS S.W.68



